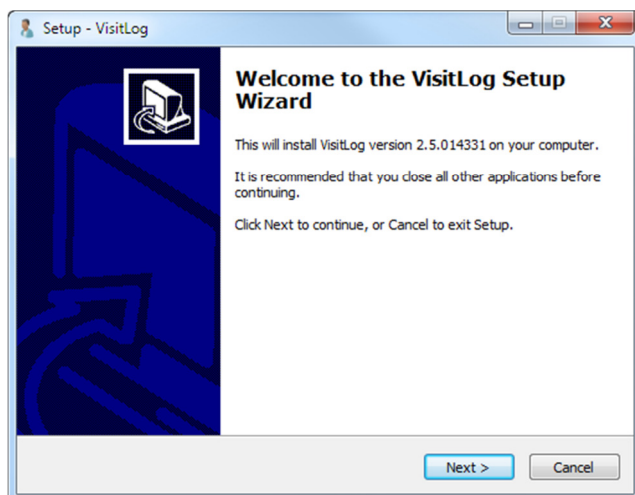
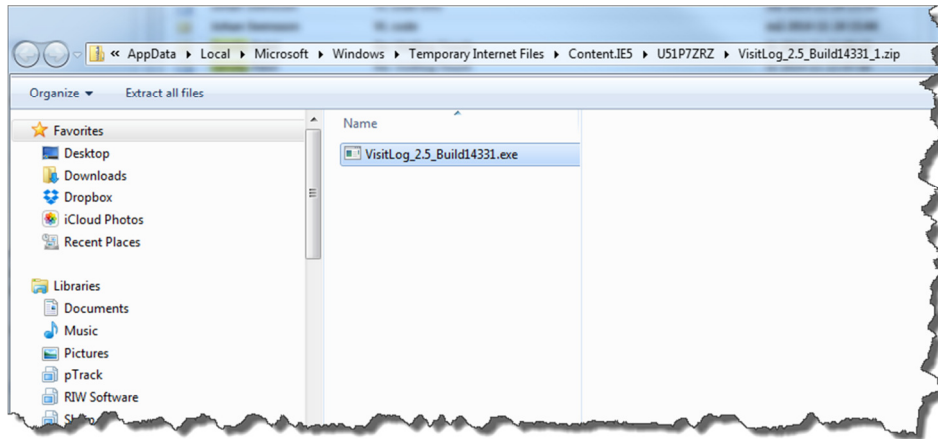


## Purpose

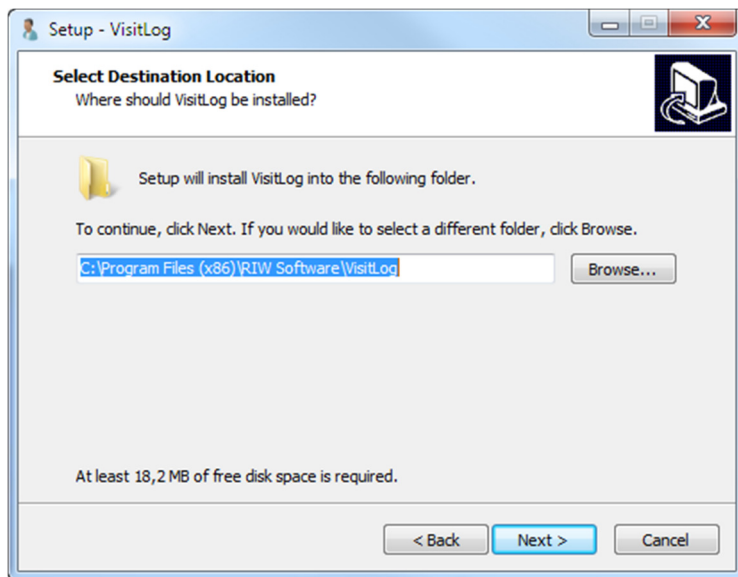
This document will help you to install VisitLog at any pc and also connect to database at first start up.

## Installation – Start

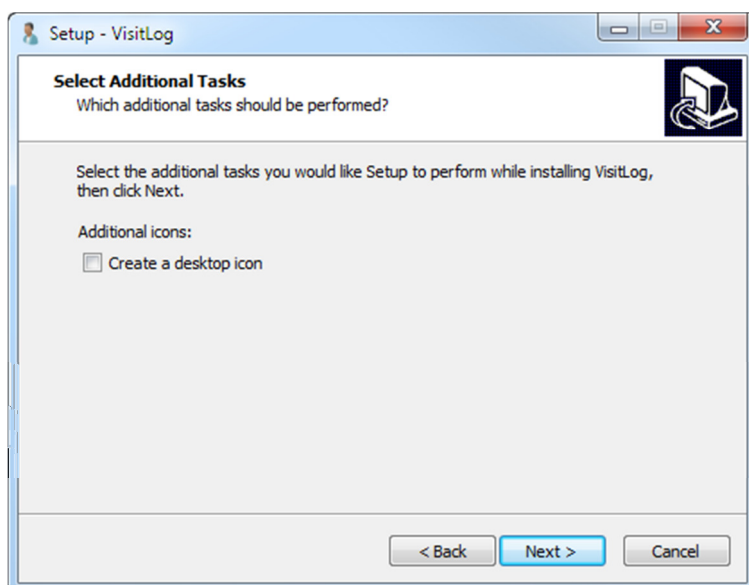
Use the link you got in mail and download VisitLog file. Click at installation file as below.



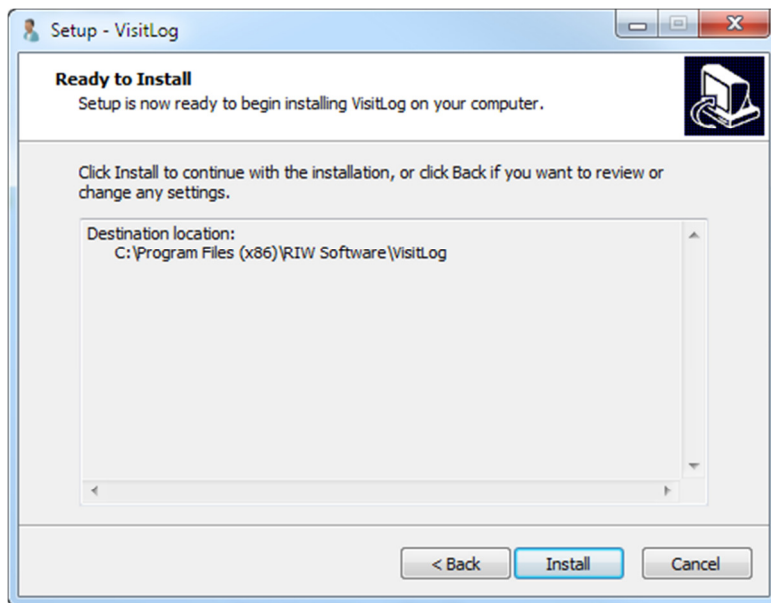
- Click Next at this screen



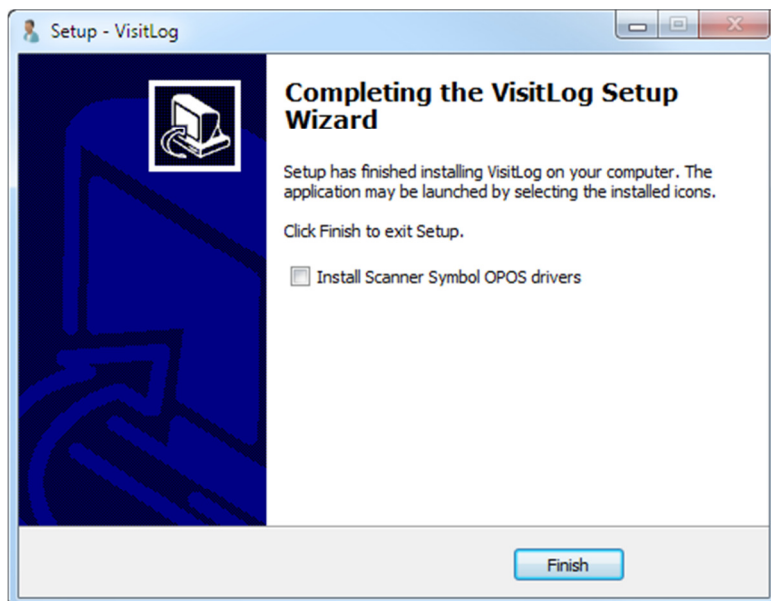
- Click Next if you don't want to change location path



- Check "Create Desktop Icon" if you want icons at you desktop
- Click Next



- Click Next



- Check "install Scanner..." if this computer is going to have scanner connected
- Click Finish

## Guide for first time db connection

This guide explains how to set up db connection first time at Visitlog. To see how sql server is installed, please follow Microsoft documentation.

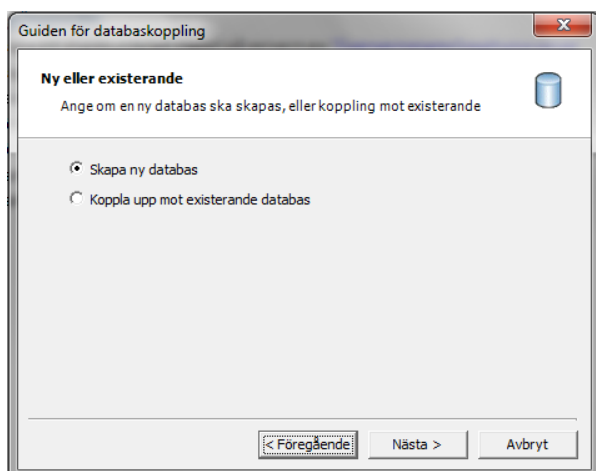
### How to

MS SQL Server 2005-2012 Express is a freeware, Installation can be made either at local machine(same as VisitLog is installed) or at an external server in network.

**Start/Click at VisitLog in programs (Manager or Kiosk).**

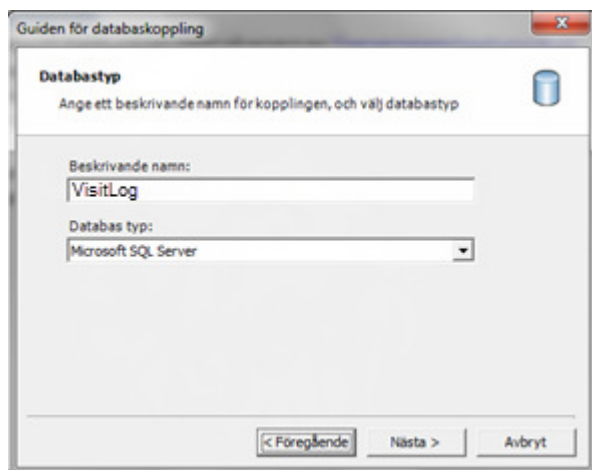
### Step 1

When this prompts at startup first time. Check alternative 1 (new database connection).



### Step 2

Give a name for connection and what type of db (MS SQL is only option)

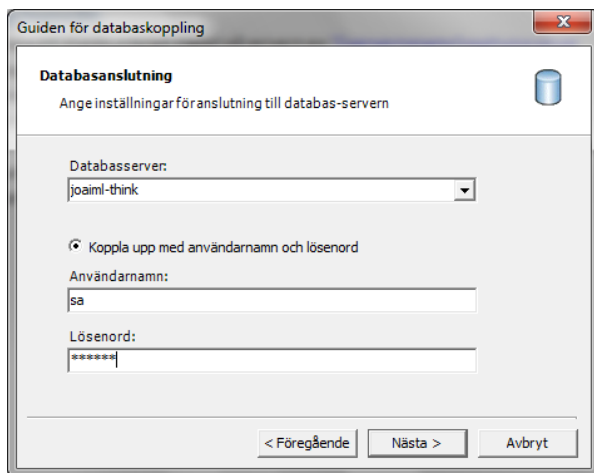


# Installation VisitLog

## Step 3

Set SQL Server name. It is usually same name as the machine SQL is installed at, computer name. If you are not sure as administrator.

- Set database server name (computer name of sql server)
- User name of SQL Server (default its SA that is user)
- Password (lösenord): It's the one that you wrote when set up sql database. Ask administrator if you don't know.



## Step 4

The database is created and the guide will finish. Now you can start VisitLog from program menu.

